

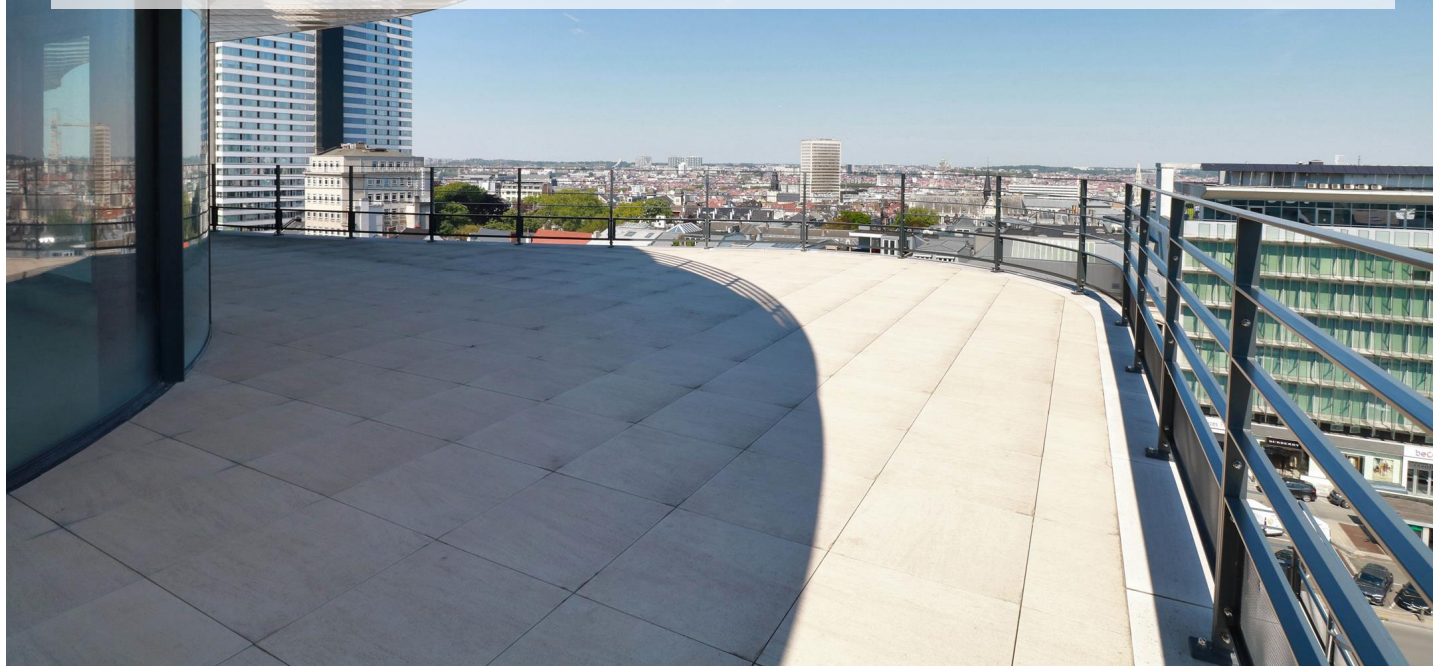
APARTMENT 160M² TERRACE 91M²

1 537 000 €

Ref 3766415

Ixelles - Apartment 1729 sq ft

**VANEAU
LECOBEL**
Real Estate Brussels



About this property

Magnificent new 2 bedroom apartment to discover, ideally located in Ixelles on the Avenue de la Toison d'Or. Covering an area of 160 m², this crossing property perched on the 7th floor with two terraces located on either side, offers exceptional living comfort with superb views and excellent light. With high-end materials such as a fully-equipped Bulthaup kitchen and quality bathrooms for each bedroom. The finishes are adjusted to the tastes of the buyer. PEB: B. Concierge service. Cellar included in the price. Possibility of acquiring a parking space. Sale subject to VAT (21%) on the construction part and registration fees (12.5%) on the land part. To visit quickly: 02 669 21 70 or promotion@lecobel.be.

VANEAU LECOBEL NEW PROJECTS

Georges Brugmann Square

10B 1050 Ixelles

ph +32 2 669 21 70

✉ promotion@lecobel.be

Reference : 3766415

Price : 1 537 000 €

Surface : 1729 sq ft

Bedroom(s) : 2

Floor : 7

Bathroom(s) : 2

Cellar : Yes

Elevator : Yes

Parking(s) : 1

Terrace : Yes

APARTMENT 160M² TERRACE 91M²

1 537 000 €

Ref 3766415

Ixelles - Apartment 1729 sq ft

**VANEAU
LECOBEL**
Real Estate Brussels



Proposition d'aménagement virtuel non contractuelle réalisée par **hubstairs**



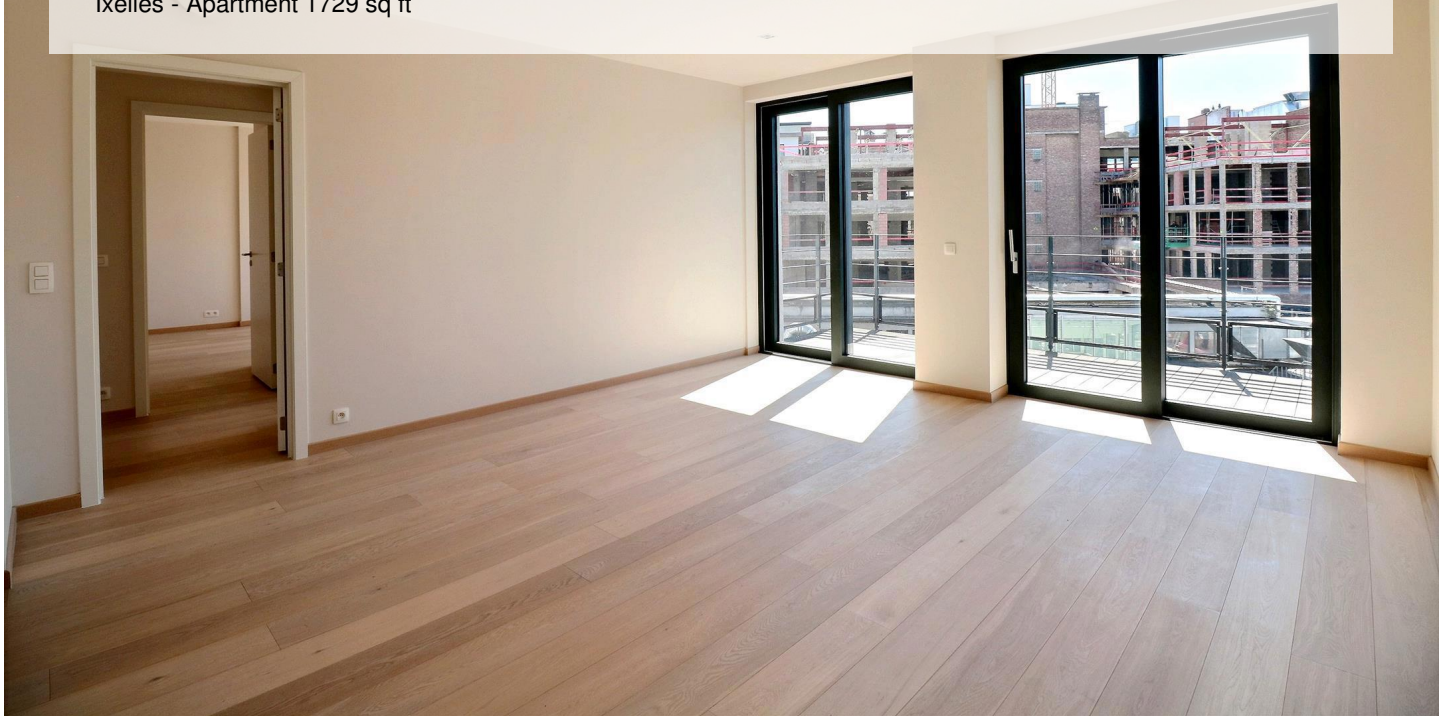
APARTMENT 160M² TERRACE 91M²

1 537 000 €

Ref 3766415

Ixelles - Apartment 1729 sq ft

**VANEAU
LECOBEL**
Real Estate Brussels



VANEAU

Immobilier de prestige depuis
1972

VANEAU LOCATION

Une équipe dédiée à Paris,
Neuilly et Boulogne

VANEAU VIAGER

30 ans d'expérience en vente
viagère

VANEAU C'EST AUSSI

VANEAU BUREAUX & COMMERCES

+10 000 offres disponibles

VANEAU PATRIMOINE

Dispositifs de défiscalisation,
SCPI, Assurances Vie

VANEAU DIGITAL NEUF

La plate-forme digitale 100%
immobilier neuf

COURTAGE CRÉDITS

Exell Crédit immobiliers
Assurances emprunteurs

GESTION LOCATIVE

GTF, plus de 7 000 lots gérés à
Paris

140 collaborateurs

1200 signatures par an

1000 immeubles par an

2.5 milliards d'actifs gérés