

# FORT JACO: BEAUTIFUL 1 BEDROOM APARTMENT + TERRACE

1 190 €

Ref 6374564

Uccle - Apartment 775 sq ft

**VANEAU  
LECOBEL**  
Real Estate Brussels



## About this property

In the Prince d'Orange district, magnificent, fully renovated, dual-aspect apartment with a total surface area of  $\pm 72$  m<sup>2</sup> on the first floor of a small condominium. It consists of a living/dining room ( $\pm 24$  m<sup>2</sup>), a fully equipped American kitchen, a dining room, a bedroom ( $\pm 14$  m<sup>2</sup>), an office space ( $\pm 10$  m<sup>2</sup>), a bathroom and a separate toilet. Rear terrace with access via the kitchen. Cellar included. Charges: €100/month (Provision for cold water and maintenance of common areas). PEB D. To discover without further delay!

VANEAU LECOBEL  
RENTALS

Georges Brugmann square  
10B, 1050 Ixelles  
ph +32 2 340 72 85

✉ [rent@vaneau-lecobel.be](mailto:rent@vaneau-lecobel.be)

**Reference :** 6374564

**Price :** 1 190 €

**Surface :** 775 sq ft

**Bedroom(s) :** 1

**Floor :** 1

**Bathroom(s) :** 1

**Shower room(s) :** 6

**Cellar :** Yes

**Terrace :** Yes

**Loads :** 100 €

# FORT JACO: BEAUTIFUL 1 BEDROOM APARTMENT + TERRACE

1 190 €

Ref 6374564

Uccle - Apartment 775 sq ft

**VANEAU  
LECOBEL**  
Real Estate Brussels









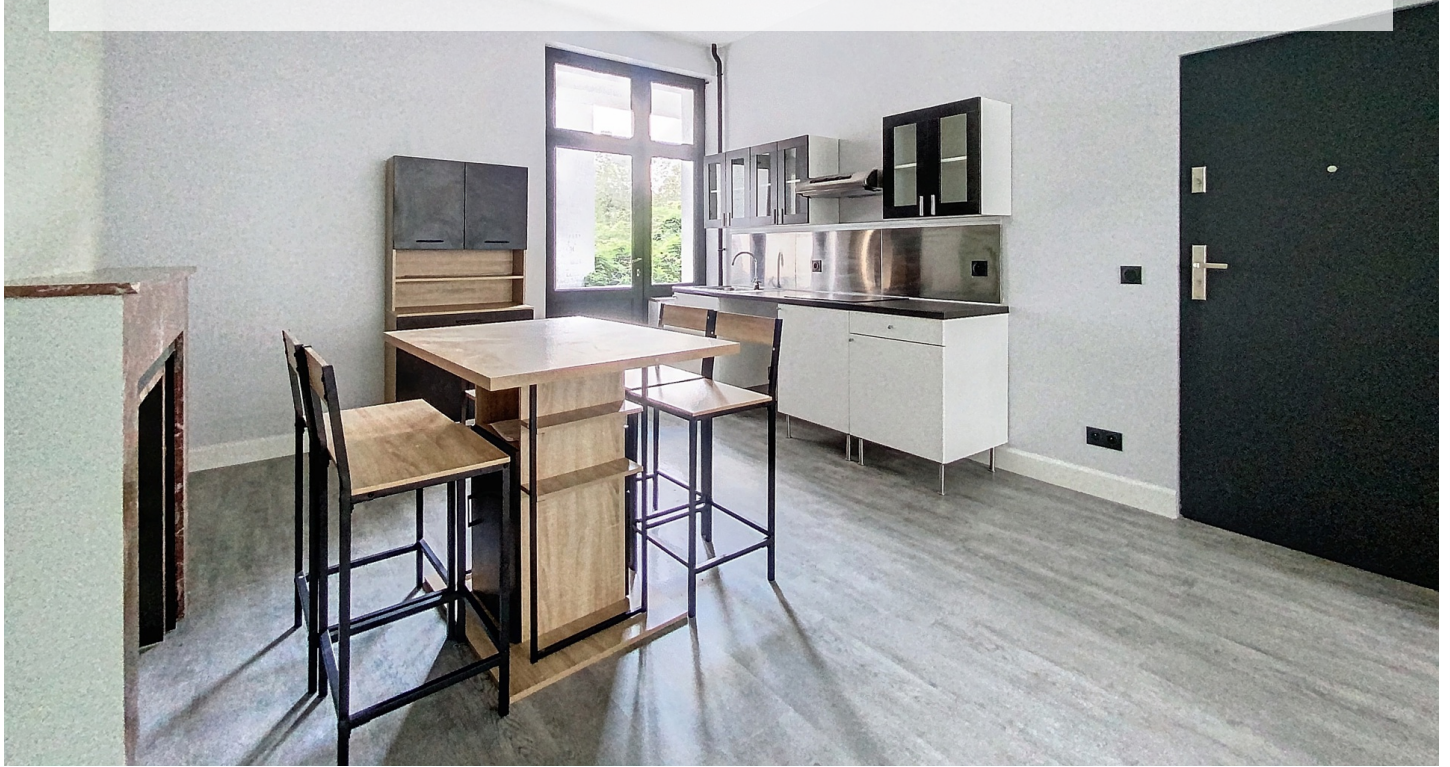
# FORT JACO: BEAUTIFUL 1 BEDROOM APARTMENT + TERRACE

1 190 €

Ref 6374564

Uccle - Apartment 775 sq ft

**VANEAU  
LECOBEL**  
Real Estate Brussels





## **VANEAU**

Immobilier de prestige depuis  
1972

### **VANEAU LOCATION**

Une équipe dédiée à Paris,  
Neuilly et Boulogne

### **VANEAU VIAGER**

30 ans d'expérience en vente  
viagère

# **VANEAU**

## **C'EST AUSSI**

### **VANEAU BUREAUX & COMMERCES**

+10 000 offres disponibles

### **VANEAU PATRIMOINE**

Dispositifs de défiscalisation,  
SCPI, Assurances Vie

### **VANEAU DIGITAL NEUF**

La plate-forme digitale 100%  
immobilier neuf

### **COURTAGE CRÉDITS**

Exell Crédit immobiliers  
Assurances emprunteurs

### **GESTION LOCATIVE**

GTF, plus de 7 000 lots gérés à  
Paris

**140 collaborateurs**

**1200 signatures par an**

**1000 immeubles par an**

**2.5 milliards d'actifs gérés**