

SCHUMAN/EUROPEAN AREA - PRIVATE OFFICE IN A COWORKING SPACE

825 €

Ref 6497200

Bruxelles - Bureaux et commerces 301 sq ft

**VANEAU
LECOBEL**
Real Estate Brussels



About this property

Ideally located in the heart of the European Quarter, in the immediate vicinity of the Rond-Point Schuman and the Parc du Cinquanteaire, furnished or unfurnished office space with a total surface area of ± 28 m² in a beautiful coworking space. It consists of an entrance hall, a large private office (± 21 m²) with a meeting room/small private office (± 7 m²), and a separate toilet. Common to the space: a soundproofed room, a fitted kitchen and a shower. Possibility to rent a cellar for an additional fee. Charges: €150/month (Fixed price for heating, water, electricity, internet and maintenance of common areas). To discover as soon as possible at Vaneau Lecobel!!!

VANEAU LECOBEL

BRUSSELS EAST

200 , Belliardstreet - 1000

Brussels

ph +32 2 669 70 90

✉ est@vaneau-lecobel.be

Reference : 6497200

Price : 825 €

Surface : 301 sq ft

Floor : 1

Cellar : Yes

Elevator : Yes

Parking(s) : 1

Loads : 150 €

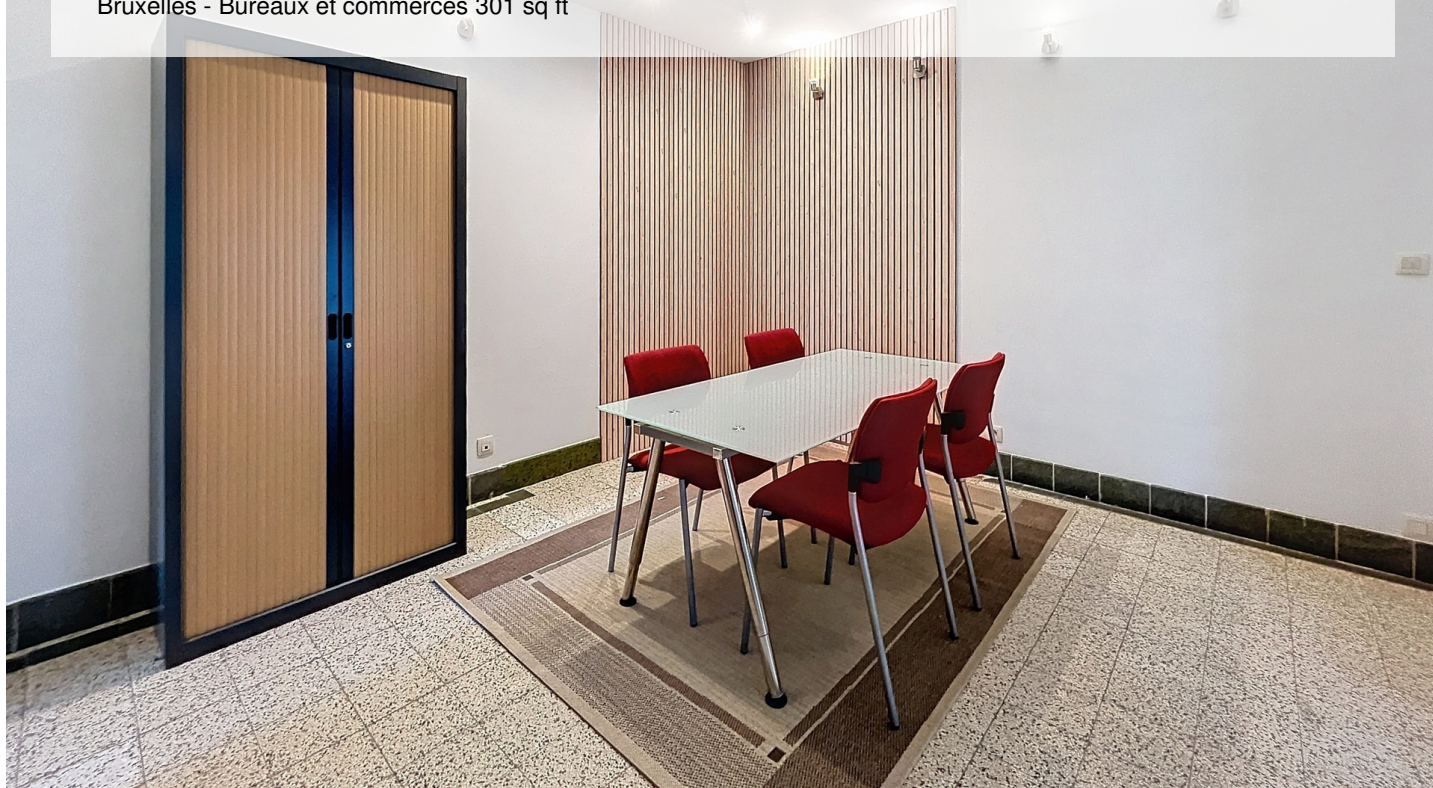
SCHUMAN/EUROPEAN AREA - PRIVATE OFFICE IN A COWORKING SPACE

825 €

Ref 6497200

Bruxelles - Bureaux et commerces 301 sq ft

**VANEAU
LECOBEL**
Real Estate Brussels





SCHUMAN/EUROPEAN AREA - PRIVATE OFFICE IN A COWORKING SPACE

825 €

Ref 6497200

Bruxelles - Bureaux et commerces 301 sq ft

**VANEAU
LECOBEL**
Real Estate Brussels





VANEAU

Immobilier de prestige depuis
1972

VANEAU LOCATION

Une équipe dédiée à Paris,
Neuilly et Boulogne

VANEAU VIAGER

30 ans d'expérience en vente
viagère

VANEAU C'EST AUSSI

VANEAU BUREAUX & COMMERCES

+10 000 offres disponibles

VANEAU PATRIMOINE

Dispositifs de défiscalisation,
SCPI, Assurances Vie

VANEAU DIGITAL NEUF

La plate-forme digitale 100%
immobilier neuf

COURTAGE CRÉDITS

Exell Crédit immobiliers
Assurances emprunteurs

GESTION LOCATIVE

GTF, plus de 7 000 lots gérés à
Paris

140 collaborateurs

1200 signatures par an

1000 immeubles par an

2.5 milliards d'actifs gérés