

# VDK HOUSING: PRETTY NEW 1 BEDROOM HOUSE + WEST GARDEN

1 700 €

Ref 6549370

Uccle - House 1023 sq ft

**VANEAU  
LECOBEL**  
Real Estate Brussels



## About this property

Close to Place Brugmann and Place Vanderkindere, magnificent new house with a total surface area of  $\pm 95 \text{ m}^2$  at the back of a new luxury residence. It consists of an entrance hall, a pretty living room with dining area ( $\pm 35 \text{ m}^2$ ), a fully equipped American kitchen, 1 beautiful bedroom on the mezzanine and open to the living room ( $\pm 19 \text{ m}^2$ ), a shower room and a toilet. Pretty terrace ( $\pm 10 \text{ m}^2$ ) overlooking a west-facing city garden. Cellar included and an additional parking space (€125/month). Secure door, double glazing, parquet flooring, heat pump with hot and cold air as well as dual-flow ventilation. Charges: €100/month (Provision for the maintenance of the common areas and the private garden, the heat pump and the dual-flow ventilation). PEB B+. To be discovered as soon as possible at Vaneau Lecobel !!

VANEAU LECOBEL

RENTALS

Georges Brugmann square

10B, 1050 Ixelles

ph +32 2 340 72 85

✉ [rent@vaneau-lecobel.be](mailto:rent@vaneau-lecobel.be)

**Reference :** 6549370

**Price :** 1 700 €

**Surface :** 1023 sq ft

**Bedroom(s) :** 1

**Bathroom(s) :** 1

**Shower room(s) :** 1

**Garden :** Yes

**Cellar :** Yes

**Parking(s) :** 1

**Terrace :** Yes

**Loads :** 100 €

**Availabili** 01/06/2025

**ty :**

# VDK HOUSING: PRETTY NEW 1 BEDROOM HOUSE + WEST GARDEN

1 700 €

Ref 6549370

Uccle - House 1023 sq ft

**VANEAU  
LECOBEL**  
Real Estate Brussels





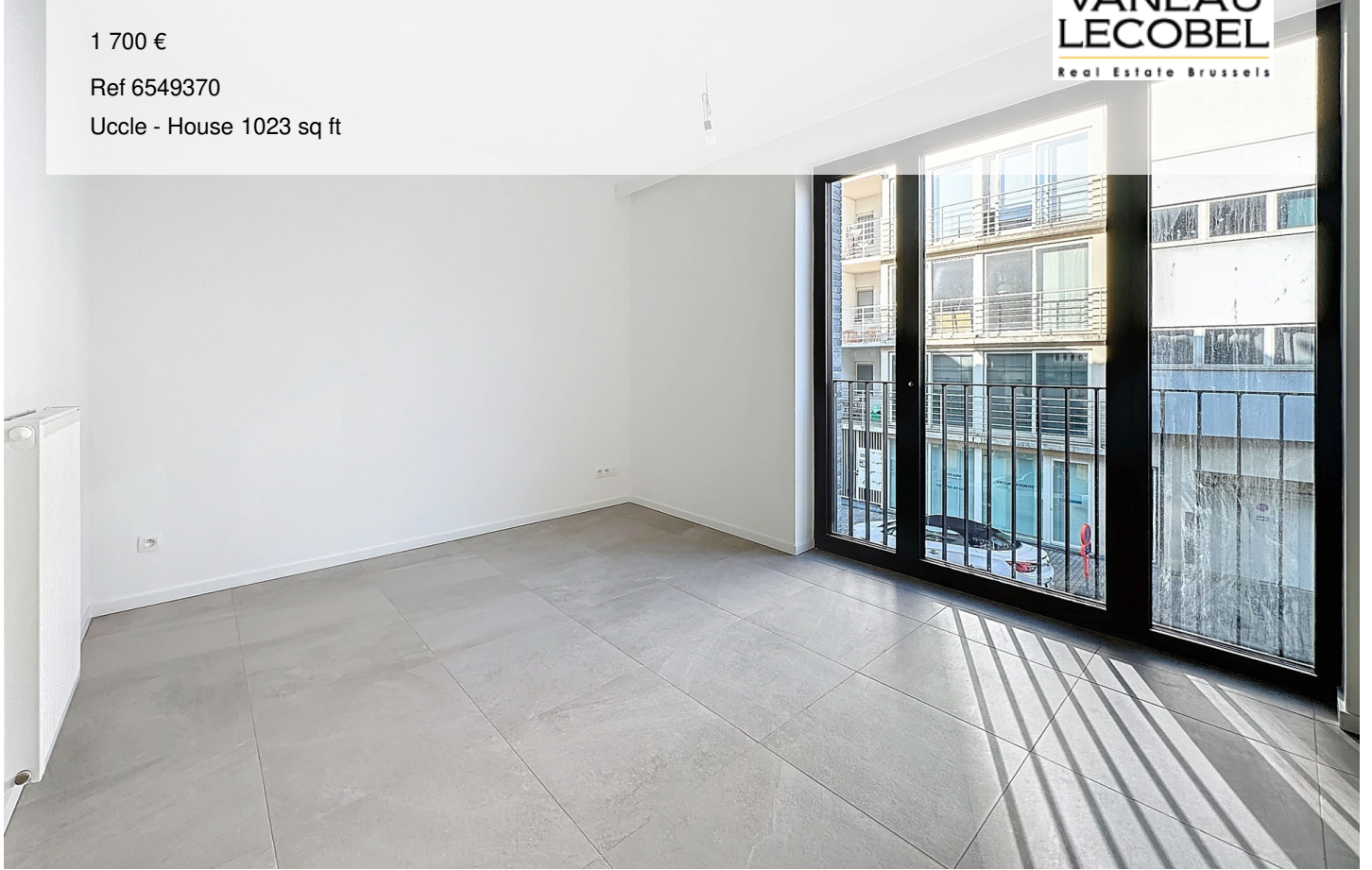
# VDK HOUSING: PRETTY NEW 1 BEDROOM HOUSE + WEST GARDEN

1 700 €

Ref 6549370

Uccle - House 1023 sq ft

**VANEAU  
LECOBEL**  
Real Estate Brussels





## **VANEAU**

Immobilier de prestige depuis  
1972

### **VANEAU LOCATION**

Une équipe dédiée à Paris,  
Neuilly et Boulogne

### **VANEAU VIAGER**

30 ans d'expérience en vente  
viagère

# **VANEAU C'EST AUSSI**

### **VANEAU BUREAUX & COMMERCES**

+10 000 offres disponibles

### **VANEAU PATRIMOINE**

Dispositifs de défiscalisation,  
SCPI, Assurances Vie

### **VANEAU DIGITAL NEUF**

La plate-forme digitale 100%  
immobilier neuf

### **COURTAGE CRÉDITS**

Exell Crédit immobiliers  
Assurances emprunteurs

### **GESTION LOCATIVE**

GTF, plus de 7 000 lots gérés à  
Paris

**140 collaborateurs**

**1200 signatures par an**

**1000 immeubles par an**

**2.5 milliards d'actifs gérés**