

ARSENAL/VUB: BEAUTIFUL 2 BEDROOM APARTMENT + TERRACE

1 690 €

Ref 6628919

Etterbeek - Apartment 1033 sq ft

**VANEAU
LECOBEL**
Real Estate Brussels



About this property

Between the Pétilion district and the VUB, charming apartment with a total surface area of $\pm 96 \text{ m}^2$ in a recent building. It consists of an entrance hall with WC, a bright and large living room with dining area ($\pm 34 \text{ m}^2$), a fully equipped American kitchen, 2 beautiful bedrooms ($\pm 14 \text{ m}^2$ and $\pm 9.50 \text{ m}^2$), a bathroom with WC and a shower room. Beautiful terrace ($\pm 28 \text{ m}^2$) facing South-West and accessible from the living room. Cellar included and an indoor parking space at a mandatory additional cost (€110/month). Alarm, double-glazed windows, videophone and wooden parquet flooring. Garden shared with the building. Charges: €170/month (Provision for maintenance of common areas). PEB C. To discover as soon as possible at Vaneau Lecobel!!

VANEAU LECOBEL
BRUSSELS EAST
200 , Belliardstreet - 1000
Brussels
ph +32 2 669 70 90
✉ est@vaneau-lecobel.be

Reference : 6628919

Price : 1 690 €

Surface : 1033 sq ft

Bedroom(s) : 2

Floor : 0

Bathroom(s) : 2

Shower room(s) : 1

Cellar : Yes

Elevator : Yes

Parking(s) : 1

Terrace : Yes

Loads : 170 €

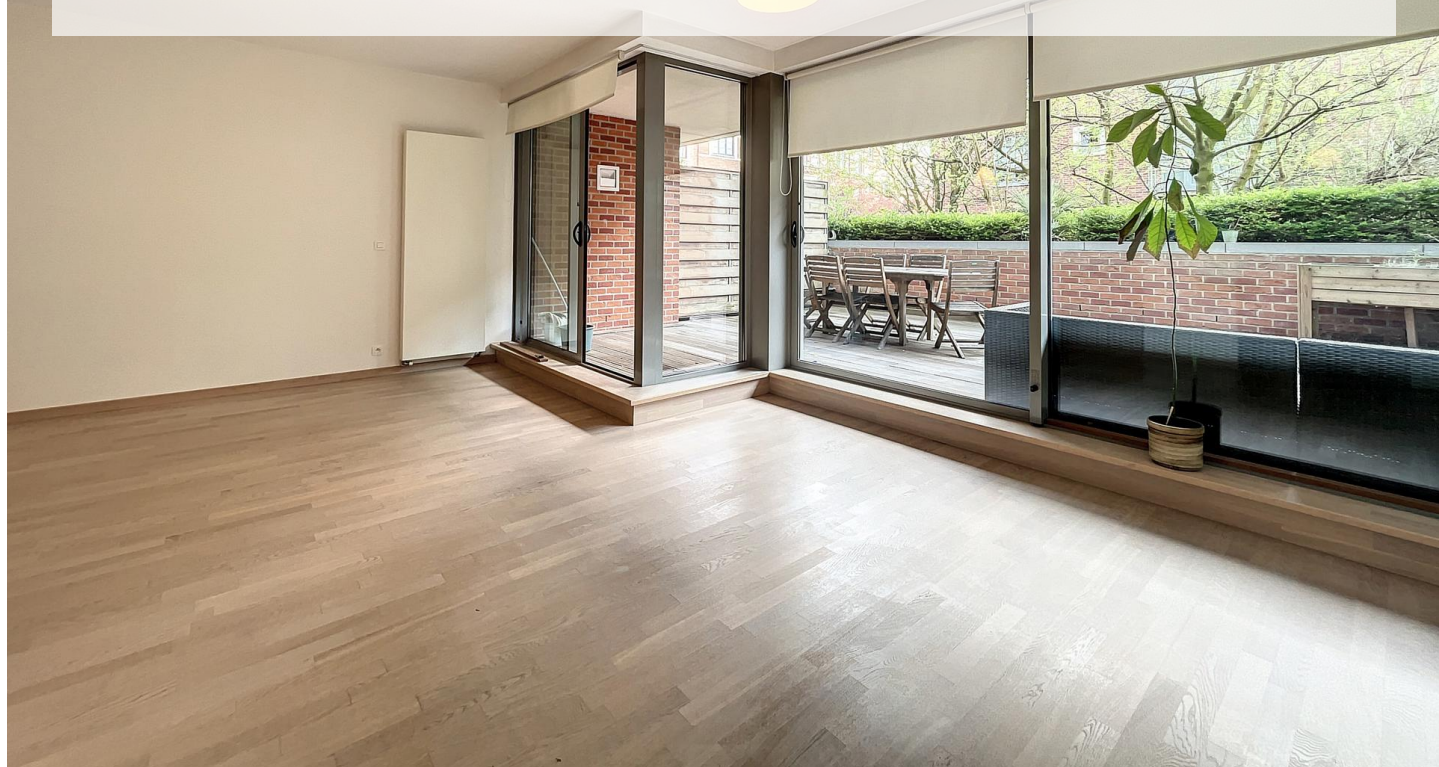
ARSENAL/VUB: BEAUTIFUL 2 BEDROOM APARTMENT + TERRACE

1 690 €

Ref 6628919

Etterbeek - Apartment 1033 sq ft

**VANEAU
LECOBEL**
Real Estate Brussels





ARSENAL/VUB: BEAUTIFUL 2 BEDROOM APARTMENT + TERRACE

1 690 €

Ref 6628919

Etterbeek - Apartment 1033 sq ft

**VANEAU
LECOBEL**
Real Estate Brussels





VANEAU

Immobilier de prestige depuis
1972

VANEAU LOCATION

Une équipe dédiée à Paris,
Neuilly et Boulogne

VANEAU VIAGER

30 ans d'expérience en vente
viagère

VANEAU C'EST AUSSI

VANEAU BUREAUX & COMMERCES

+10 000 offres disponibles

VANEAU PATRIMOINE

Dispositifs de défiscalisation,
SCPI, Assurances Vie

VANEAU DIGITAL NEUF

La plate-forme digitale 100%
immobilier neuf

COURTAGE CRÉDITS

Exell Crédit immobiliers
Assurances emprunteurs

GESTION LOCATIVE

GTF, plus de 7 000 lots gérés à
Paris

140 collaborateurs

1200 signatures par an

1000 immeubles par an

2.5 milliards d'actifs gérés