

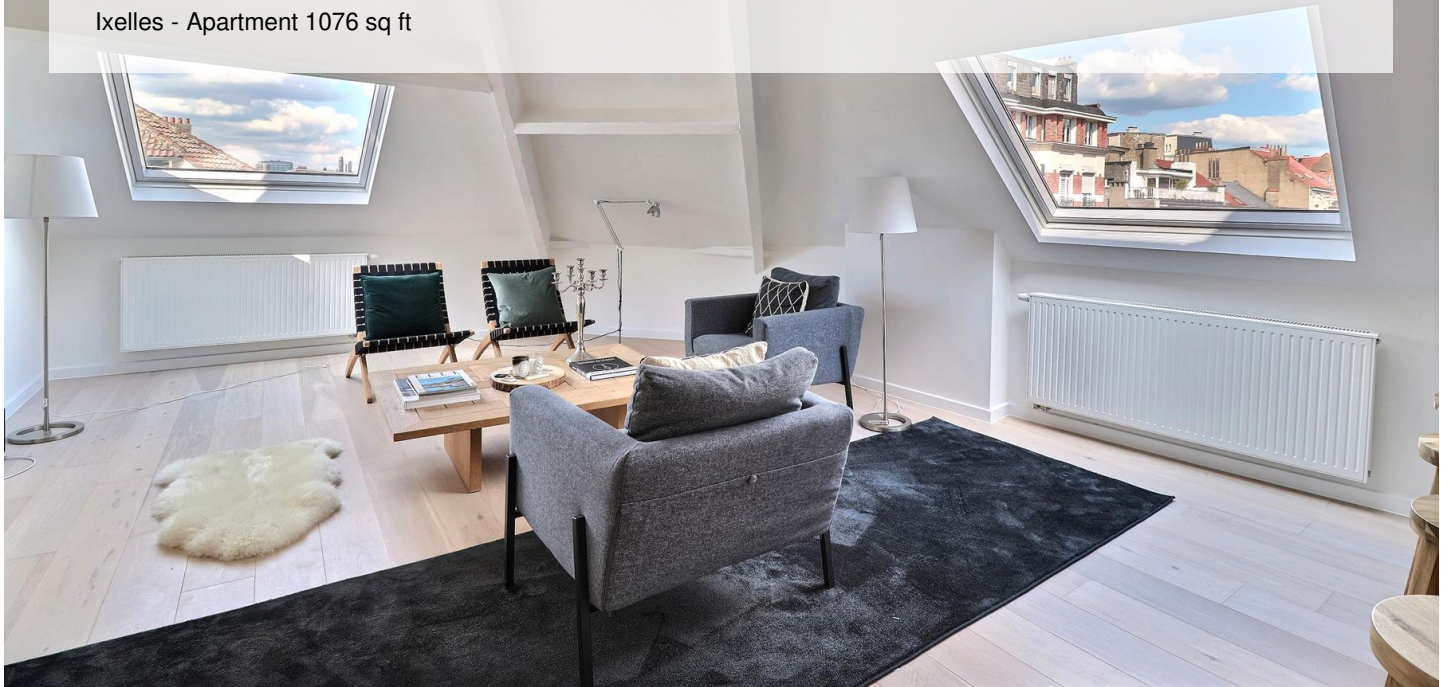
PLACE BRUGMANN: BEAUTIFUL 90 M² DUPLEX (2 BEDROOMS + OFFICE)

1 750 €

Ref 6629779

Ixelles - Apartment 1076 sq ft

**VANEAU
LECOBEL**
Real Estate Brussels



About this property

Ideally located near Place Brugmann, magnificent duplex apartment with a total surface area of ± 90 m² in a charming small condominium. It consists of an entrance hall, a bright living room with dining room (± 40 m²), a beautiful fully equipped American kitchen, 2 beautiful bedrooms (± 17 m² and ± 9 m²), an office (8m²), 2 shower rooms, a laundry room and a separate toilet. Cellar included and possibility of renting a parking space in the immediate vicinity. Bicycle storage. Individual boiler and PVC double glazing. Charges: €120/month (Provision for the maintenance of common areas and the trustee). PEB C +. To discover as soon as possible !! Available from 04/15/25.

VANEAU LECOBEL

RENTALS

Georges Brugmann square

10B, 1050 Ixelles

ph +32 2 340 72 85

✉ rent@vaneau-lecobel.be

Reference : 6629779

Price : 1 750 €

Surface : 1076 sq ft

Bedroom(s) : 2

Floor : 4

Bathroom(s) : 2

Shower room(s) : 2

Cellar : Yes

Loads : 120 €

Availabili 15/04/2025

ty :

PLACE BRUGMANN: BEAUTIFUL 90 M² DUPLEX (2 BEDROOMS + OFFICE)

1 750 €

Ref 6629779

Ixelles - Apartment 1076 sq ft

**VANEAU
LECOBEL**
Real Estate Brussels



PLACE BRUGMANN: BEAUTIFUL 90 M² DUPLEX (2
BEDROOMS + OFFICE)

1 750 €

Ref 6629779

Ixelles - Apartment 1076 sq ft

VANEAU
LECOBEL
Real Estate Brussels



VANEAU

Immobilier de prestige depuis
1972

VANEAU LOCATION

Une équipe dédiée à Paris,
Neuilly et Boulogne

VANEAU VIAGER

30 ans d'expérience en vente
viagère

VANEAU

C'EST AUSSI

VANEAU BUREAUX & COMMERCES

+10 000 offres disponibles

VANEAU PATRIMOINE

Dispositifs de défiscalisation,
SCPI, Assurances Vie

VANEAU DIGITAL NEUF

La plate-forme digitale 100%
immobilier neuf

COURTAGE CRÉDITS

Exell Crédit immobiliers
Assurances emprunteurs

GESTION LOCATIVE

GTF, plus de 7 000 lots gérés à
Paris

140 collaborateurs

1200 signatures par an

1000 immeubles par an

2.5 milliards d'actifs gérés