

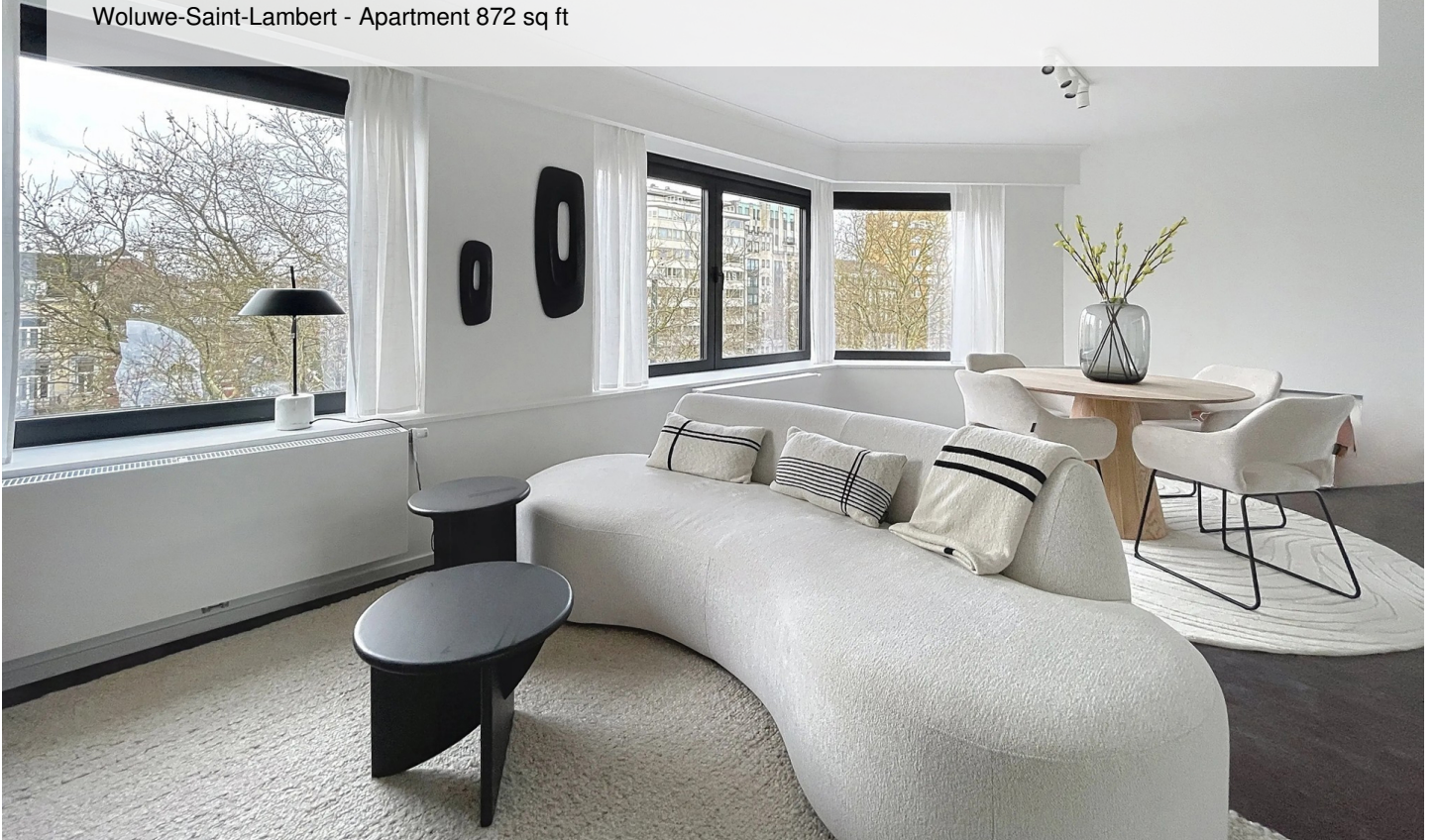
# MONTGOMERY - BRIGHT FURNISHED FLAT

1 950 €

Ref 6645586

Woluwe-Saint-Lambert - Apartment 872 sq ft

**VANEAU  
LECOBEL**  
Real Estate Brussels



## About this property

Ideally located near Montgomery and the Parc du Cinquantenaire, magnificent apartment with a total surface area of  $\pm 81 \text{ m}^2$  in a luxury residence. It consists of an entrance hall with separate toilet, a large and bright living room with a dining area, a fully equipped kitchen, 2 beautiful bedrooms ( $\pm 15 \text{ m}^2$  and  $\pm 11 \text{ m}^2$ ) and a shower room. Cellar included. Double glazed frames and 1st occupation after work. Bicycle storage and garbage storage. Company lease contract possible. Charges: €200/month (Provision for heating, hot and cold water and maintenance of common areas). PEB C+. Discover it as soon as possible at Vaneau Lecobel!

VANEAU LECOBEL  
BRUSSELS EAST  
200 , Belliardstreet - 1000  
Brussels  
ph +32 2 669 70 90  
✉ [est@vaneau-lecobel.be](mailto:est@vaneau-lecobel.be)

**Reference :** 6645586

**Price :** 1 950 €

**Surface :** 872 sq ft

**Bedroom(s) :** 2

**Floor :** 5

**Bathroom(s) :** 1

**Shower room(s) :** 1

**Cellar :** Yes

**Elevator :** Yes

**Loads :** 200 €



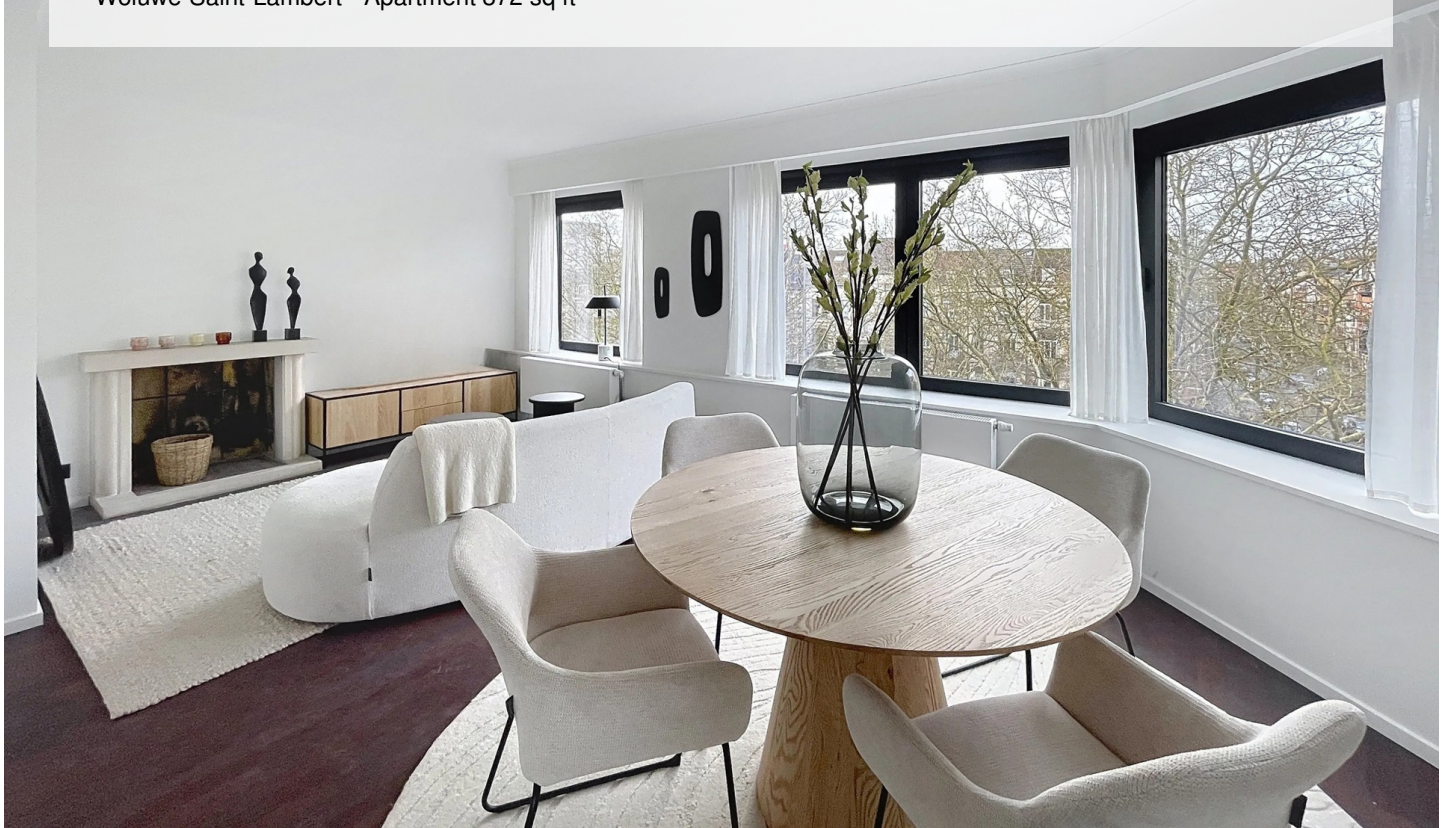
# MONTGOMERY - BRIGHT FURNISHED FLAT

1 950 €

Ref 6645586

Woluwe-Saint-Lambert - Apartment 872 sq ft

**VANEAU  
LECOBEL**  
Real Estate Brussels







# MONTGOMERY - BRIGHT FURNISHED FLAT

1 950 €

Ref 6645586

Woluwe-Saint-Lambert - Apartment 872 sq ft

**VANEAU  
LECOBEL**  
Real Estate Brussels





## **VANEAU**

Immobilier de prestige depuis  
1972

### **VANEAU LOCATION**

Une équipe dédiée à Paris,  
Neuilly et Boulogne

### **VANEAU VIAGER**

30 ans d'expérience en vente  
viagère

# **VANEAU**

## **C'EST AUSSI**

### **VANEAU BUREAUX & COMMERCES**

+10 000 offres disponibles

### **VANEAU PATRIMOINE**

Dispositifs de défiscalisation,  
SCPI, Assurances Vie

### **VANEAU DIGITAL NEUF**

La plate-forme digitale 100%  
immobilier neuf

### **COURTAGE CRÉDITS**

Exell Crédit immobiliers  
Assurances emprunteurs

### **GESTION LOCATIVE**

GTF, plus de 7 000 lots gérés à  
Paris

**140 collaborateurs**

**1200 signatures par an**

**1000 immeubles par an**

**2.5 milliards d'actifs gérés**