

"CARRÉ COGHEN" PROJECT: MAGNIFICENT NEW FLAT

2 300 €

Ref 6653998

Uccle - Apartment 1340 sq ft

**VANEAU
LECOBEL**
Real Estate Brussels



About this property

Ideally located near the Parvis Saint-Pierre, magnificent apartment with a total surface area of $\pm 124 \text{ m}^2$ in the new residence "Carré Coghen". It consists of an entrance hall, a bright living room with a dining area ($\pm 38 \text{ m}^2$), a beautiful fully equipped American kitchen, 3 beautiful bedrooms ($\pm 13 \text{ m}^2$, $\pm 11 \text{ m}^2$ and $\pm 10 \text{ m}^2$), a bathroom adjoining the master bedroom and a shower room. Beautiful terrace ($\pm 17 \text{ m}^2$) facing South. Cellar ($\pm 4 \text{ m}^2$) and a parking space included in the first basement. The apartment benefits from photovoltaic panels and an individual heat pump. Charges: €200/month (Provision for the maintenance of the common areas and the upkeep of the shared garden). PEB A. To discover exclusively at Vaneau Lecobel!!

VANEAU LECOBEL

RENTALS

Georges Brugmann square

10B, 1050 Ixelles

ph +32 2 340 72 85

✉ rent@vaneau-lecobel.be

Reference : 6653998

Price : 2 300 €

Surface : 1340 sq ft

Bedroom(s) : 3

Floor : 1

Bathroom(s) : 2

Shower room(s) : 2

Cellar : Yes

Elevator : Yes

Parking(s) : 1

Terrace : Yes

Loads : 200 €

Availability : 01/04/2025

"CARRÉ COGHEN" PROJECT: MAGNIFICENT NEW FLAT

2 300 €

Ref 6653998

Uccle - Apartment 1340 sq ft

**VANEAU
LECOBEL**
Real Estate Brussels





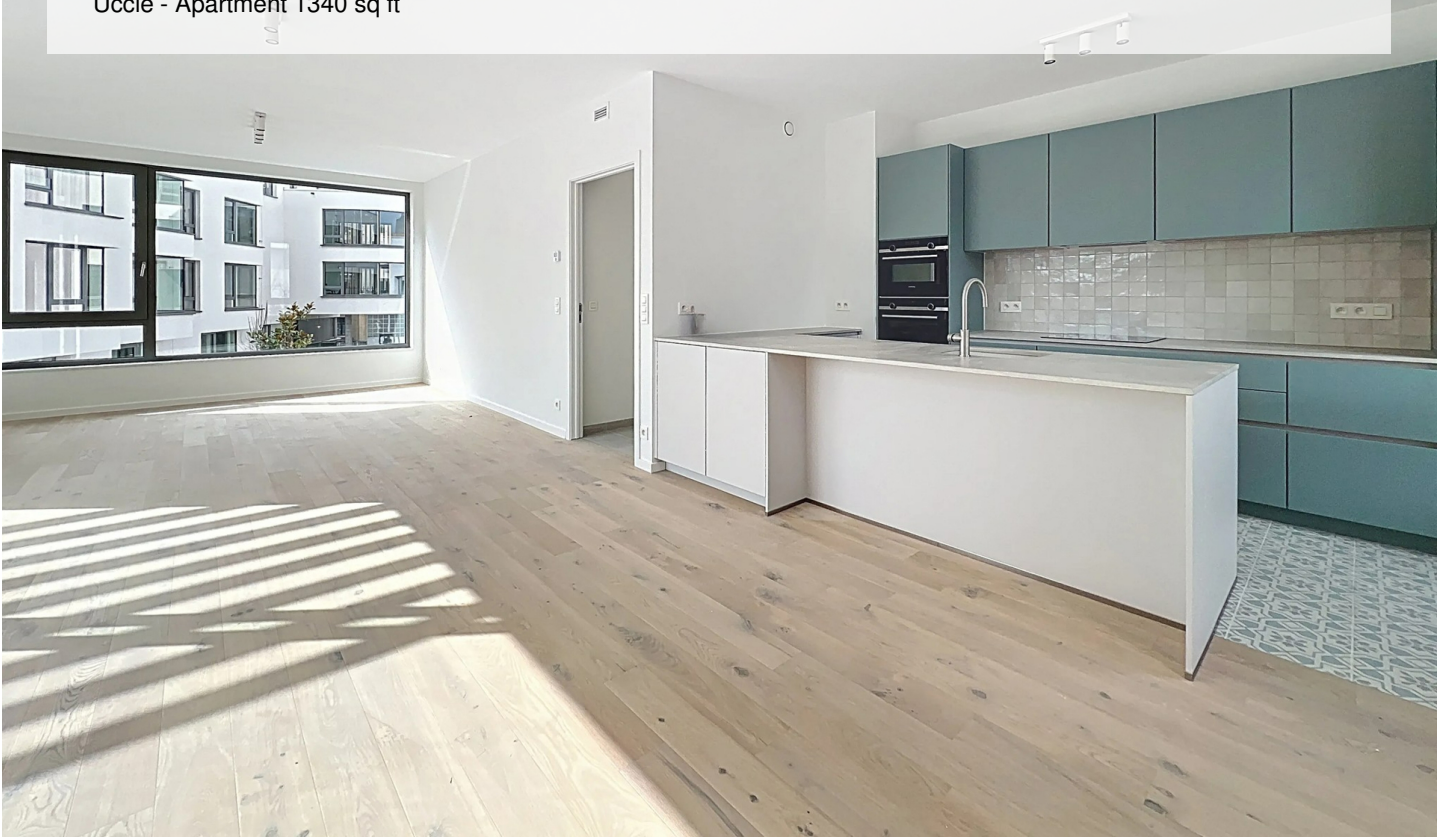
"CARRÉ COGHEN" PROJECT: MAGNIFICENT NEW FLAT

2 300 €

Ref 6653998

Uccle - Apartment 1340 sq ft

**VANEAU
LECOBEL**
Real Estate Brussels





VANEAU

Immobilier de prestige depuis
1972

VANEAU LOCATION

Une équipe dédiée à Paris,
Neuilly et Boulogne

VANEAU VIAGER

30 ans d'expérience en vente
viagère

VANEAU

C'EST AUSSI

VANEAU BUREAUX & COMMERCES

+10 000 offres disponibles

VANEAU PATRIMOINE

Dispositifs de défiscalisation,
SCPI, Assurances Vie

VANEAU DIGITAL NEUF

La plate-forme digitale 100%
immobilier neuf

COURTAGE CRÉDITS

Exell Crédit immobiliers
Assurances emprunteurs

GESTION LOCATIVE

GTF, plus de 7 000 lots gérés à
Paris

140 collaborateurs

1200 signatures par an

1000 immeubles par an

2.5 milliards d'actifs gérés