

ETANGS BOITSFORT: MAGNIFICENT HOUSE WITH 3 FACADES + GARDEN

3 200 €

Ref 6660332

Watermael-Boitsfort - House 2067 sq ft

**VANEAU
LECOBEL**
Real Estate Brussels



About this property

Near the Forêt de Soignes and the Boitsfort ponds, former estaminet from the 1900s converted into a charming 3-facade house with a total surface area of ± 192 m². It consists of a bright living room (± 34 m²), a fully equipped American kitchen (± 17.80 m²), a dining room (± 15.50 m²), a night hall, 4 beautiful bedrooms (± 15.40 m², ± 11.20 m², ± 12.80 m² and ± 18.80 m²), a bathroom and a shower room. Magnificent terrace on the top floor (± 25 m²) with a magnificent view as well as a second terrace (± 11.50 m²) on the ground floor which overlooks a pretty town garden (± 25 m²). An outdoor parking space and an indoor box ideal for storage or bicycles. Alarm, videophone, solid parquet flooring, alarm, double flow ventilation system, heat pump, underfloor heating, electric gate, electric vehicle socket and rainwater recovery tank. PEB C. To discover as soon as possible at Vaneau Lecobel!!!

VANEAU LECOBEL

RENTALS

Georges Brugmann square

10B, 1050 Ixelles

ph +32 2 340 72 85

✉ rent@vaneau-lecobel.be

Reference : 6660332

Price : 3 200 €

Surface : 2067 sq ft

Bedroom(s) : 4

Bathroom(s) : 2

Shower room(s) : 1

Garden : Yes

Cellar : Yes

Parking(s) : 1

Terrace : Yes

Availabili 01/04/2025

ty :

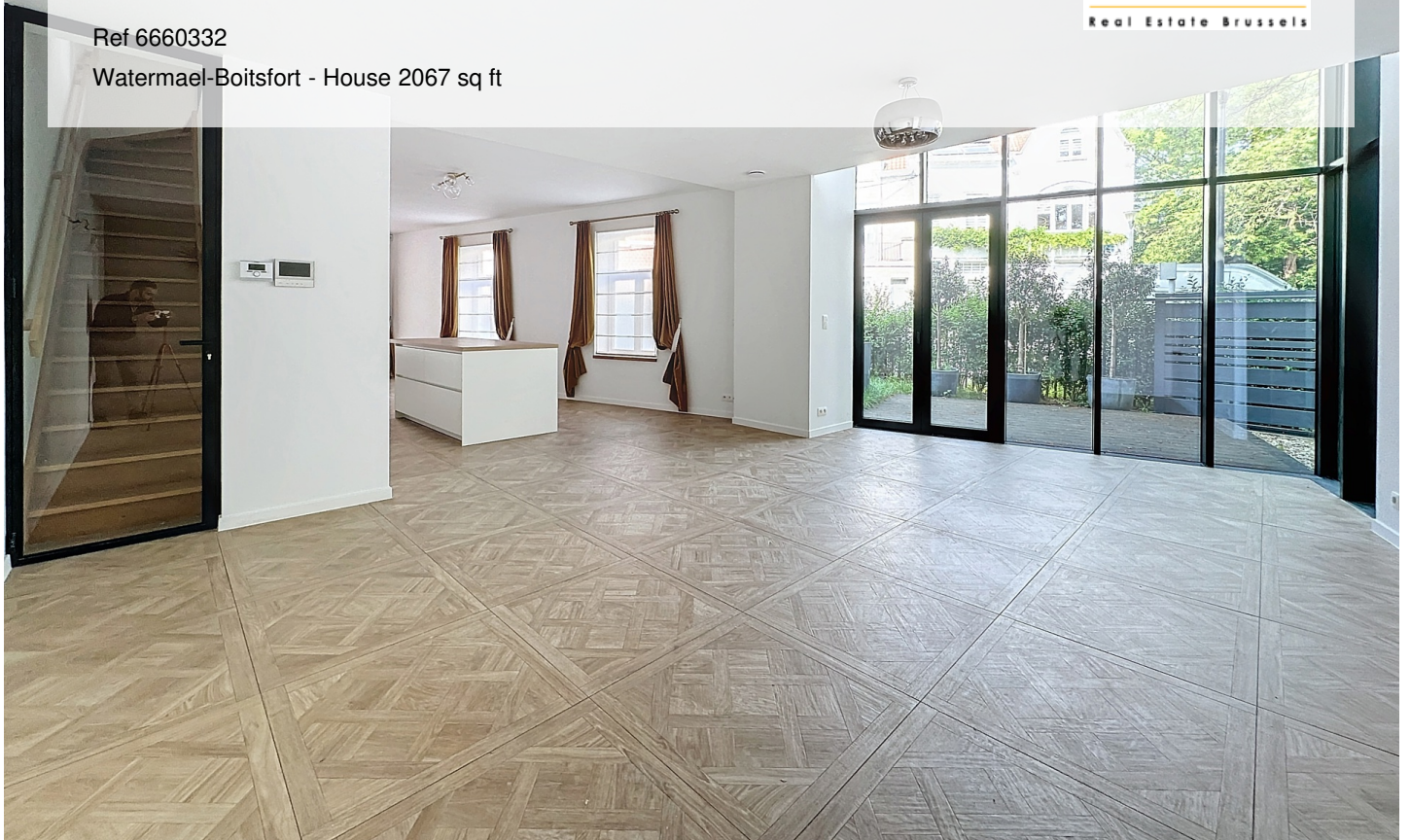
ETANGS BOITSFORT: MAGNIFICENT HOUSE WITH 3 FACADES + GARDEN

3 200 €

Ref 6660332

Watermael-Boitsfort - House 2067 sq ft

**VANEAU
LECOBEL**
Real Estate Brussels





ETANGS BOITSFORT: MAGNIFICENT HOUSE WITH 3 FACADES + GARDEN

3 200 €

Ref 6660332

Watermael-Boitsfort - House 2067 sq ft

**VANEAU
LECOBEL**
Real Estate Brussels





VANEAU

Immobilier de prestige depuis
1972

VANEAU LOCATION

Une équipe dédiée à Paris,
Neuilly et Boulogne

VANEAU VIAGER

30 ans d'expérience en vente
viagère

VANEAU C'EST AUSSI

VANEAU BUREAUX & COMMERCES

+10 000 offres disponibles

VANEAU PATRIMOINE

Dispositifs de défiscalisation,
SCPI, Assurances Vie

VANEAU DIGITAL NEUF

La plate-forme digitale 100%
immobilier neuf

COURTAGE CRÉDITS

Exell Crédit immobiliers
Assurances emprunteurs

GESTION LOCATIVE

GTF, plus de 7 000 lots gérés à
Paris

140 collaborateurs

1200 signatures par an

1000 immeubles par an

2.5 milliards d'actifs gérés