

BRUGMANN COURT: BEAUTIFUL 2 BR APARTMENT + TERRACE + PARKING

1 900 €

Ref 6665801

IXELLES - Apartment 1195 sq ft

**VANEAU
LECOBEL**
Real Estate Brussels



About this property

Opposite Place Brugmann, superb apartment in perfect condition with a total surface area of $\pm 111 \text{ m}^2$ in the Brugmann Court residence. It consists of an entrance hall with cloakroom and water closet, a large living room ($\pm 35 \text{ m}^2$), a fully equipped open-plan kitchen, a night hall, 2 beautiful bedrooms ($\pm 15 \text{ m}^2$ and $\pm 13 \text{ m}^2$), 2 bathrooms and a technical room. Beautiful terrace ($\pm 12 \text{ m}^2$) facing East. Cellar included and an indoor parking space at an additional cost (€200/month). Shared garden and concierge in the residence. Charges: €140/month (Provision for the maintenance of common areas). PEB C+. To discover as soon as possible!

VANEAU LECOBEL
RENTALS

Georges Brugmann square
10B, 1050 Ixelles
ph +32 2 340 72 85

✉ rent@vaneau-lecobel.be

Reference : 6665801

Price : 1 900 €

Surface : 1195 sq ft

Bedroom(s) : 2

Floor : 3

Bathroom(s) : 2

Shower room(s) : 1

Garden : Yes

Cellar : Yes

Elevator : Yes

Parking(s) : 1

Terrace : Yes

Loads : 140 €

Availabili 01/05/2025

ty :

BRUGMANN COURT: BEAUTIFUL 2 BR APARTMENT + TERRACE + PARKING

1 900 €

Ref 6665801

IXELLES - Apartment 1195 sq ft

**VANEAU
LECOBEL**
Real Estate Brussels





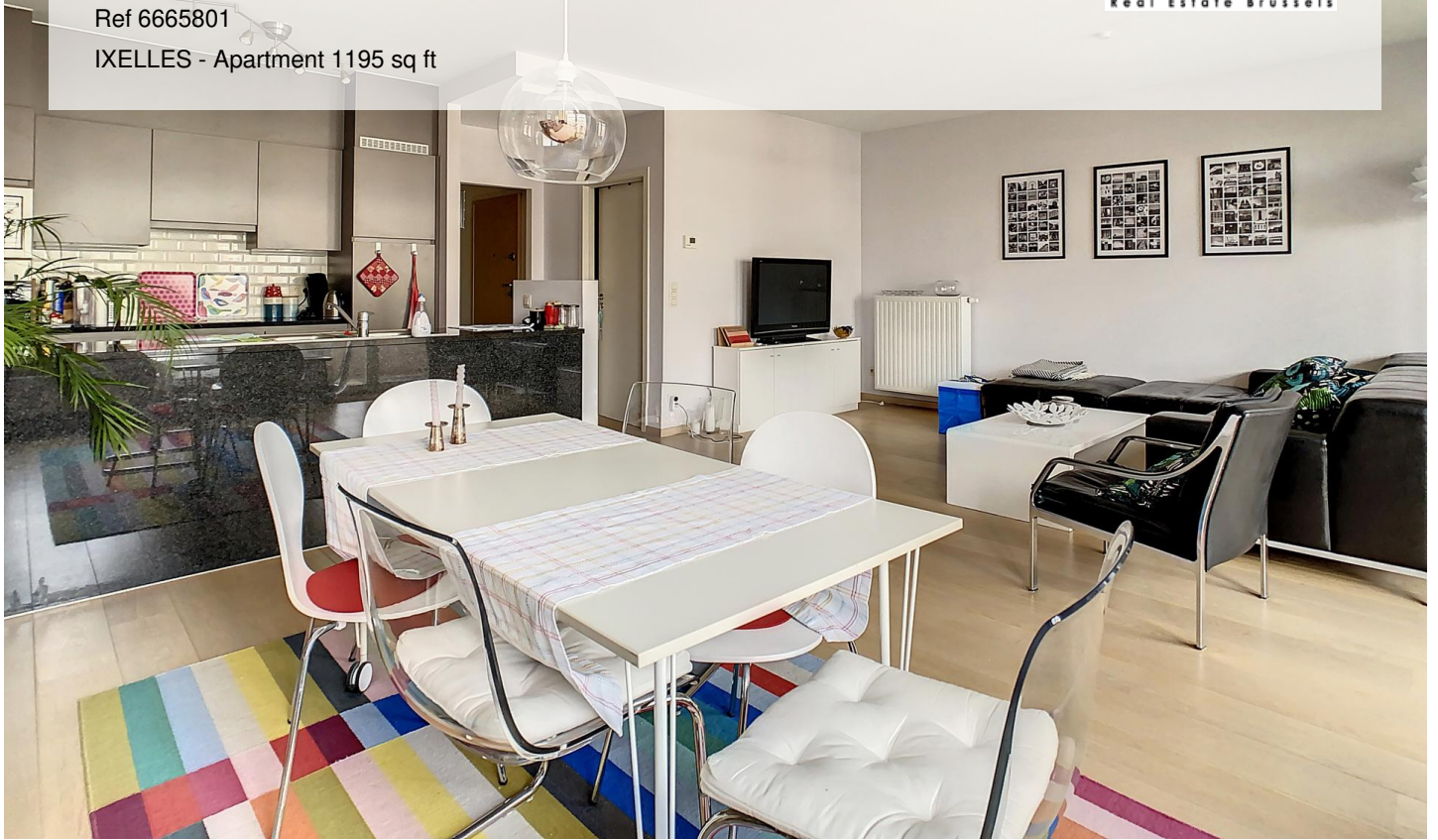
BRUGMANN COURT: BEAUTIFUL 2 BR APARTMENT + TERRACE + PARKING

1 900 €

Ref 6665801

IXELLES - Apartment 1195 sq ft

**VANEAU
LECOBEL**
Real Estate Brussels





VANEAU

Immobilier de prestige depuis
1972

VANEAU LOCATION

Une équipe dédiée à Paris,
Neuilly et Boulogne

VANEAU VIAGER

30 ans d'expérience en vente
viagère

VANEAU

C'EST AUSSI

VANEAU BUREAUX & COMMERCES

+10 000 offres disponibles

VANEAU PATRIMOINE

Dispositifs de défiscalisation,
SCPI, Assurances Vie

VANEAU DIGITAL NEUF

La plate-forme digitale 100%
immobilier neuf

COURTAGE CRÉDITS

Exell Crédit immobiliers
Assurances emprunteurs

GESTION LOCATIVE

GTF, plus de 7 000 lots gérés à
Paris

140 collaborateurs

1200 signatures par an

1000 immeubles par an

2.5 milliards d'actifs gérés