

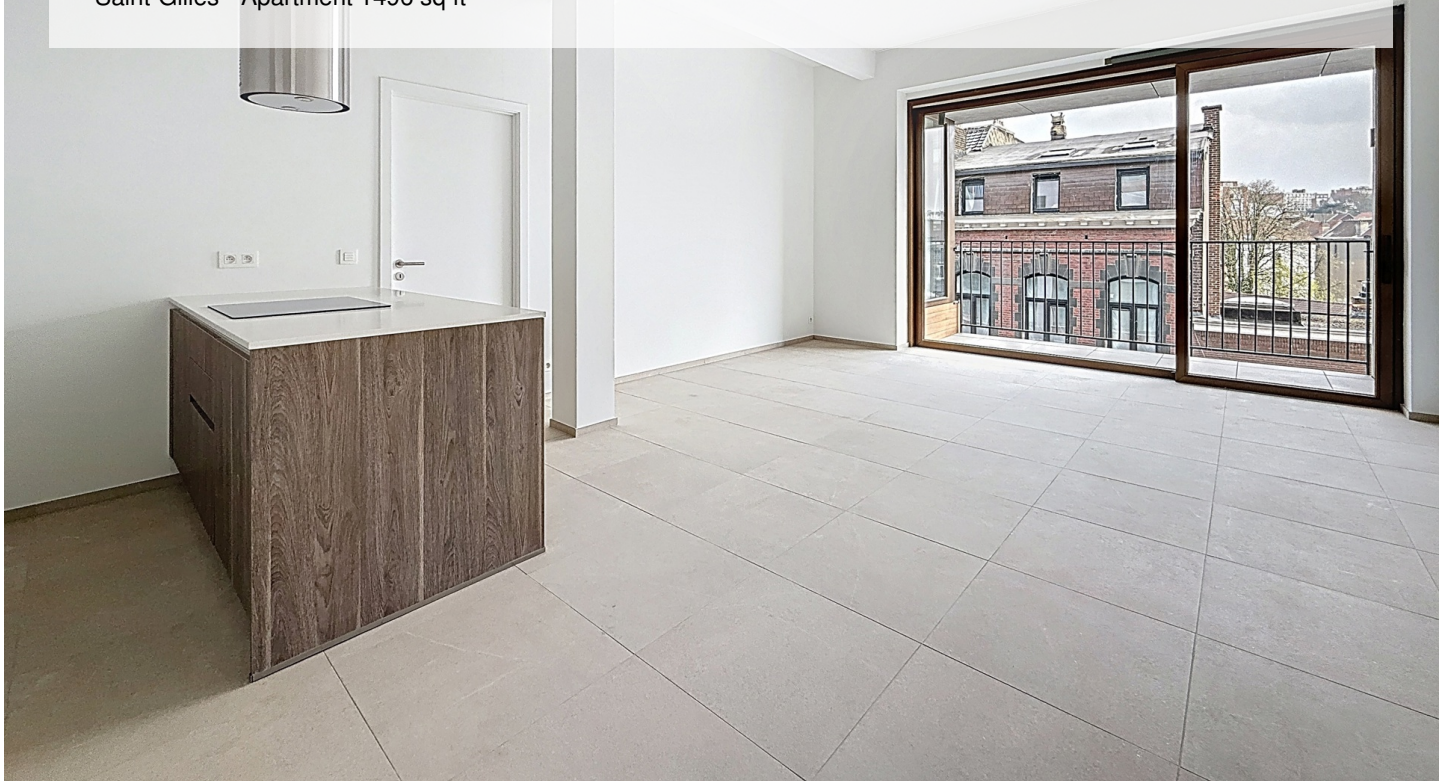
JOURDAN: BEAUTIFUL NEW 4 BEDROOM APARTMENT + TERRACE

2 750 €

Ref 6683772

Saint-Gilles - Apartment 1496 sq ft

**VANEAU
LECOBEL**
Real Estate Brussels



About this property

Between Avenue Louise and Porte de Hal, magnificent new apartment with a total surface area of ± 139 m² in a new luxury residence. It consists of an entrance hall, a lovely living room (± 34 m²), a fully equipped kitchen, 4 beautiful bedrooms (± 18 m², 14 m², 11 m² and ± 11 m²), two shower rooms, a bathroom and a separate toilet. Lovely terrace (± 6 m²). Cellar at an additional cost (€30/month) and a parking space at an additional cost (€125/month). Secure door, double glazing, individual gas boiler and double-flow ventilation. Charges: €370/month (Provision for the maintenance of common areas, the boiler and the double-flow ventilation). PEB B+. Discover it as soon as possible at Vaneau Lecobel!!

VANEAU LECOBEL

RENTALS

Georges Brugmann square

10B, 1050 Ixelles

ph +32 2 340 72 85

✉ rent@vaneau-lecobel.be

Reference : 6683772

Price : 2 750 €

Surface : 1496 sq ft

Bedroom(s) : 4

Floor : 5

Bathroom(s) : 3

Shower room(s) : 3

Cellar : Yes

Elevator : Yes

Parking(s) : 1

Terrace : Yes

Loads : 370 €

JOURDAN: BEAUTIFUL NEW 4 BEDROOM APARTMENT + TERRACE

2 750 €

Ref 6683772

Saint-Gilles - Apartment 1496 sq ft

**VANEAU
LECOBEL**
Real Estate Brussels





JOURDAN: BEAUTIFUL NEW 4 BEDROOM APARTMENT + TERRACE

2 750 €

Ref 6683772

Saint-Gilles - Apartment 1496 sq ft

**VANEAU
LECOBEL**
Real Estate Brussels





VANEAU

Immobilier de prestige depuis
1972

VANEAU LOCATION

Une équipe dédiée à Paris,
Neuilly et Boulogne

VANEAU VIAGER

30 ans d'expérience en vente
viagère

VANEAU C'EST AUSSI

VANEAU BUREAUX & COMMERCES

+10 000 offres disponibles

VANEAU PATRIMOINE

Dispositifs de défiscalisation,
SCPI, Assurances Vie

VANEAU DIGITAL NEUF

La plate-forme digitale 100%
immobilier neuf

COURTAGE CRÉDITS

Exell Crédit immobiliers
Assurances emprunteurs

GESTION LOCATIVE

GTF, plus de 7 000 lots gérés à
Paris

140 collaborateurs

1200 signatures par an

1000 immeubles par an

2.5 milliards d'actifs gérés