

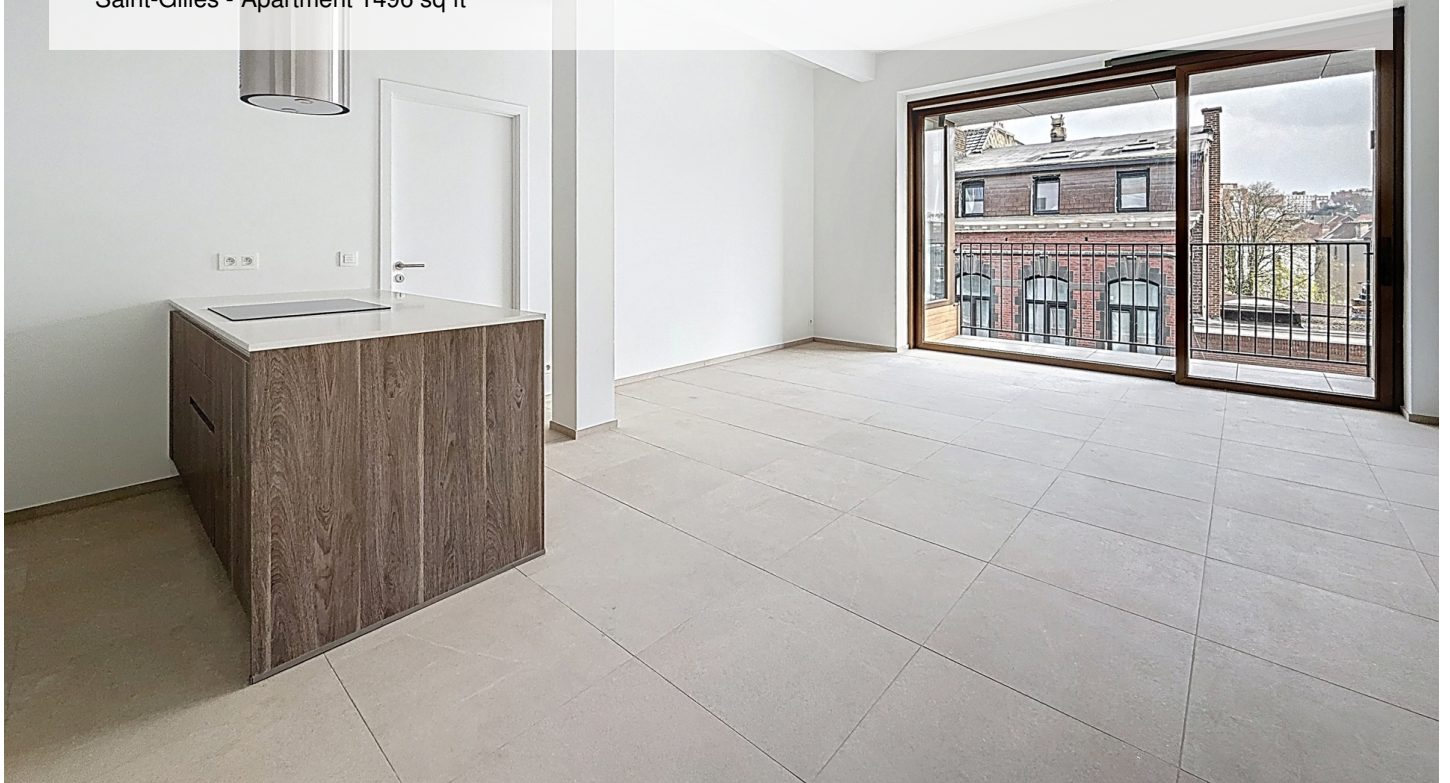
# JOURDAN: BEAUTIFUL NEW 4 BEDROOM APARTMENT + TERRACE

2 750 €

Ref 6683766

Saint-Gilles - Apartment 1496 sq ft

**VANEAU  
LECOBEL**  
Real Estate Brussels



## About this property

Between Avenue Louise and Porte de Hal, magnificent new apartment with a total surface area of  $\pm 139$  m<sup>2</sup> in a new luxury residence. It consists of an entrance hall, a lovely living room ( $\pm 34$  m<sup>2</sup>), a fully equipped kitchen, 4 beautiful bedrooms ( $\pm 18$  m<sup>2</sup>, 14 m<sup>2</sup>, 11 m<sup>2</sup> and  $\pm 11$  m<sup>2</sup>), two shower rooms, a bathroom and a separate toilet. Lovely terrace ( $\pm 6$  m<sup>2</sup>). Cellar at an additional cost (€30/month) and a parking space at an additional cost (€125/month). Secure door, double glazing, individual gas boiler and double-flow ventilation. Charges: €370/month (Provision for the maintenance of common areas, the boiler and the double-flow ventilation). PEB B+. Discover it as soon as possible at Vaneau Lecobel!!

VANEAU LECOBEL

RENTALS

Georges Brugmann square

10B, 1050 Ixelles

ph +32 2 340 72 85

✉ [rent@vaneau-lecobel.be](mailto:rent@vaneau-lecobel.be)

**Reference :** 6683766

**Price :** 2 750 €

**Surface :** 1496 sq ft

**Bedroom(s) :** 4

**Floor :** 3

**Bathroom(s) :** 3

**Shower room(s) :** 3

**Cellar :** Yes

**Elevator :** Yes

**Parking(s) :** 1

**Terrace :** Yes

**Loads :** 370 €

# JOURDAN: BEAUTIFUL NEW 4 BEDROOM APARTMENT + TERRACE

2 750 €

Ref 6683766

Saint-Gilles - Apartment 1496 sq ft

**VANEAU  
LECOBEL**  
Real Estate Brussels









# JOURDAN: BEAUTIFUL NEW 4 BEDROOM APARTMENT + TERRACE

2 750 €

Ref 6683766

Saint-Gilles - Apartment 1496 sq ft

**VANEAU  
LECOBEL**  
Real Estate Brussels





## **VANEAU**

Immobilier de prestige depuis  
1972

### **VANEAU LOCATION**

Une équipe dédiée à Paris,  
Neuilly et Boulogne

### **VANEAU VIAGER**

30 ans d'expérience en vente  
viagère

# **VANEAU C'EST AUSSI**

### **VANEAU BUREAUX & COMMERCES**

+10 000 offres disponibles

### **VANEAU PATRIMOINE**

Dispositifs de défiscalisation,  
SCPI, Assurances Vie

### **VANEAU DIGITAL NEUF**

La plate-forme digitale 100%  
immobilier neuf

### **COURTAGE CRÉDITS**

Exell Crédit immobiliers  
Assurances emprunteurs

### **GESTION LOCATIVE**

GTF, plus de 7 000 lots gérés à  
Paris

**140 collaborateurs**

**1200 signatures par an**

**1000 immeubles par an**

**2.5 milliards d'actifs gérés**