

# PETIT SABLON: CHARMING FURNISHED 2 BR. APARTMENT + BALCONY

1 900 €

Ref 6685535

Bruxelles - Apartment 1475 sq ft

**VANEAU  
LECOBEL**  
Real Estate Brussels



## About this property

Close to the prestigious Sablon district and Boulevard de Waterloo, magnificent furnished apartment with a total surface area of  $\pm 137 \text{ m}^2$  in a residential building. It consists of a large entrance hall ( $\pm 11.80 \text{ m}^2$ ), a spacious living room ( $\pm 26 \text{ m}^2$ ), a pretty dining room ( $\pm 18.15 \text{ m}^2$ ), a fully equipped kitchen, 2 beautiful bedrooms ( $\pm 20.60 \text{ m}^2$  and  $\pm 13.95 \text{ m}^2$ ), a bathroom and a separate toilet. Nice balcony accessible from the kitchen. Cellar included. High ceilings and double glazing. Sumptuous shared terrace on the top floor with a magnificent view of Brussels. Charges: €350/month (Provision for heating and maintenance of common areas). PEB E. To discover as soon as possible at Vaneau Lecobel!!

VANEAU LECOBEL  
RENTALS

Georges Brugmann square  
10B, 1050 Ixelles  
ph +32 2 340 72 85

✉ [rent@vaneau-lecobel.be](mailto:rent@vaneau-lecobel.be)

**Reference :** 6685535

**Price :** 1 900 €

**Surface :** 1475 sq ft

**Bedroom(s) :** 2

**Floor :** 2

**Bathroom(s) :** 1

**Shower room(s) :** 0

**Cellar :** Yes

**Elevator :** Yes

**Terrace :** Yes

**Loads :** 350 €

**PETIT SABLON: CHARMING FURNISHED 2 BR.  
APARTMENT + BALCONY**

1 900 €

Ref 6685535

Bruxelles - Apartment 1475 sq ft

**VANEAU  
LECOBEL**  
Real Estate Brussels





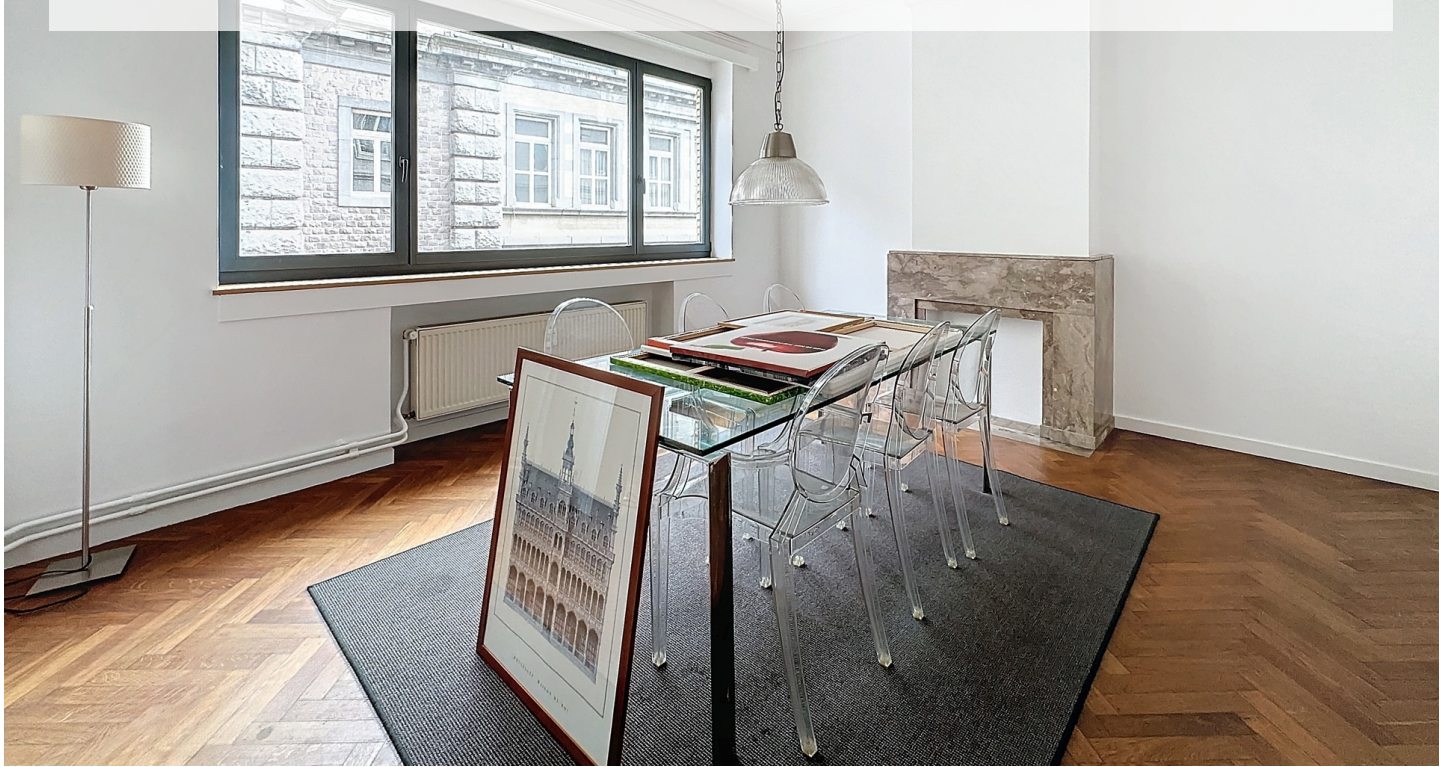
**PETIT SABLON: CHARMING FURNISHED 2 BR.  
APARTMENT + BALCONY**

1 900 €

Ref 6685535

Bruxelles - Apartment 1475 sq ft

**VANEAU  
LECOBEL**  
Real Estate Brussels





## **VANEAU**

Immobilier de prestige depuis  
1972

### **VANEAU LOCATION**

Une équipe dédiée à Paris,  
Neuilly et Boulogne

### **VANEAU VIAGER**

30 ans d'expérience en vente  
viagère

# **VANEAU**

## **C'EST AUSSI**

### **VANEAU BUREAUX & COMMERCES**

+10 000 offres disponibles

### **VANEAU PATRIMOINE**

Dispositifs de défiscalisation,  
SCPI, Assurances Vie

### **VANEAU DIGITAL NEUF**

La plate-forme digitale 100%  
immobilier neuf

### **COURTAGE CRÉDITS**

Exell Crédit immobiliers  
Assurances emprunteurs

### **GESTION LOCATIVE**

GTF, plus de 7 000 lots gérés à  
Paris

**140 collaborateurs**

**1200 signatures par an**

**1000 immeubles par an**

**2.5 milliards d'actifs gérés**